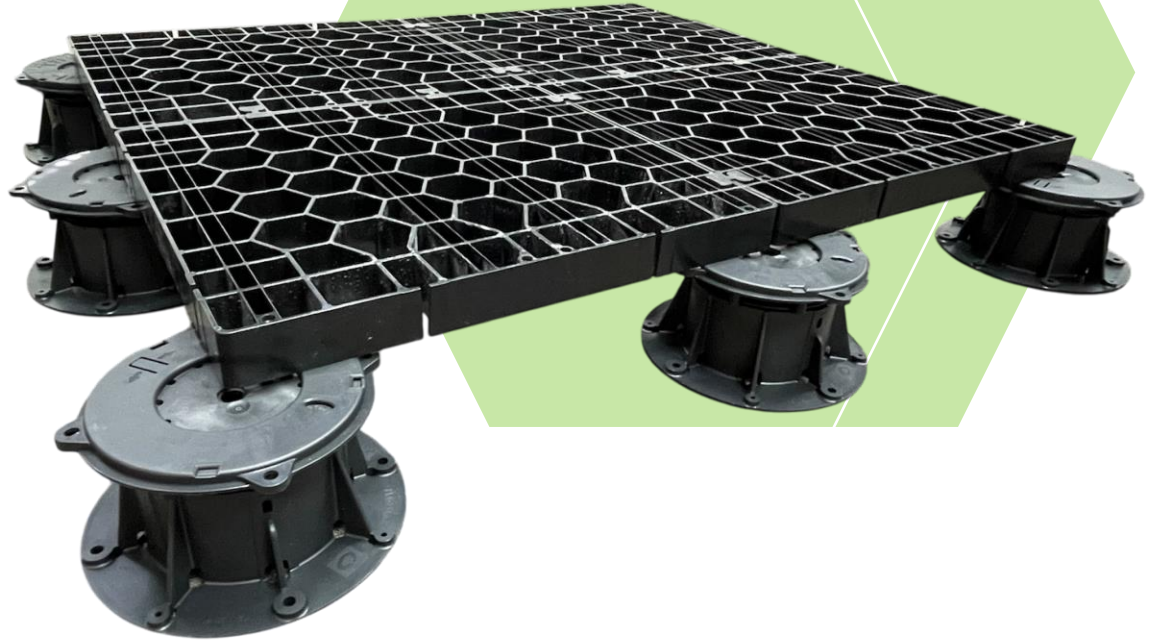




SILCA SYSTEM OVER-MEMBRANE



INSIDE THIS ISSUE

PG. 2

Explore the key benefits of this new development.

PG. 3

Range of pedestal heights available.

PG. 4

Notes and contact

OVER-MEMBRANE

SILCA SYSTEM GRATES INSTALLED ON ADJUSTABLE PEDESTALS

Silca System installed direct on adjustable pedestal, now optimised for over-membrane applications.

Designed to meet the high standards of demanding residential and commercial environments, Silca System Grates deliver a robust and cost-effective solution that aligns with E2/AS1 standards.



KEY BENEFITS:

DIRECT INSTALLATION ON ADJUSTABLE PEDESTALS:

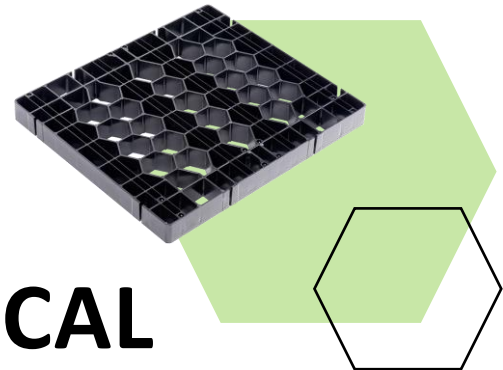
Our grates pair seamlessly with the Buzon Pedestal, enhancing versatility and durability for any exterior surface material.

SUPPORT FOR A RANGE OF SURFACES:

Whether it's natural stone, terrazzo tile, porcelain, or artificial turf, Silca System Grates provide solid structural support without compromising design flexibility.

FLEXIBLE PACKAGE OPTIONS:

We offer supply-only or supply & install packages, tailored to meet your project requirements.



TECHNICAL HIGHLIGHTS:

DURABILITY & LOAD-BEARING CAPACITY:

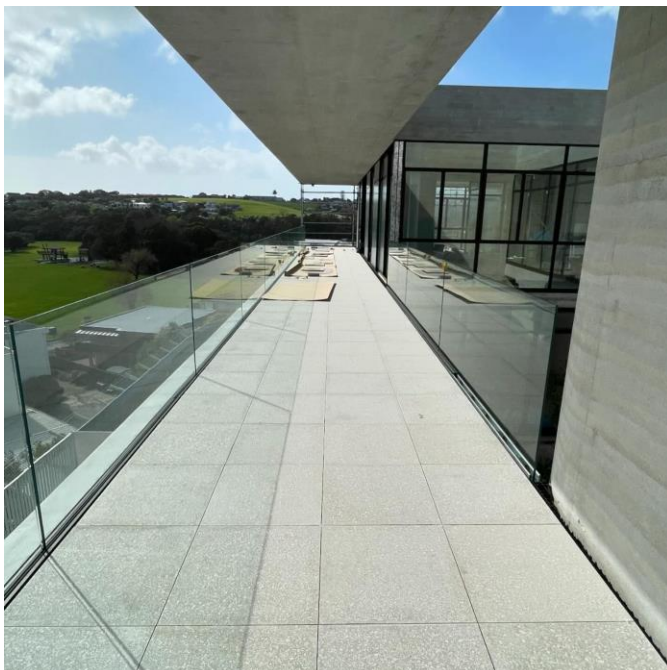
Engineered to handle high-traffic commercial environments.

SUSTAINABILITY & COMPLIANCE:

Meets the standards required for structural and durability performance.

Compliance to B1/VM1 and B2 of AS/NZS1170.1. and E2/AS1
Permeable surface – level entry through threshold.

SILCA SYSTEM PRODUCTS ARE NZ MADE FROM 100% RECYCLED MATERIALS - GREEN BUILD PRODUCT.



Our DPH-series



Fixed



Adjustable

DPH-series without integrated slope corrector



DPH-F17
11 0682
17 mm

DPH-F28
11 0684
28 mm

DPH-1
11 2378
18-28 mm

DPH-02
11 0683
25-36 mm

DPH-2
11 0685
35-53 mm

DPH-3
11 0687
50-78 mm

DPH-series with integrated slope corrector



DPH-02-PH5
11 2356
33-44 mm

DPH-2-PH5
11 0686
44-57 mm

DPH-3-PH5
11 0688
55-79 mm

DPH-4-PH5
11 0691
77-108 mm

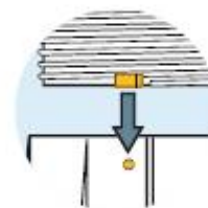
DPH-5-PH5
11 0693
100-175 mm

DPH-6-PH5
11 0767
175-285 mm

DPH-7-PH5
11 0768
285-400 mm



Integrated **slope corrector**



An **unscrewing safety system** preventing each element from detaching **at the maximum height reached**





Silca®
SYSTEM



Buzon®