

Figure 17A: Level thresholds for enclosed decks
 Paragraphs 7.3, 8.5.1 and Figure 17B

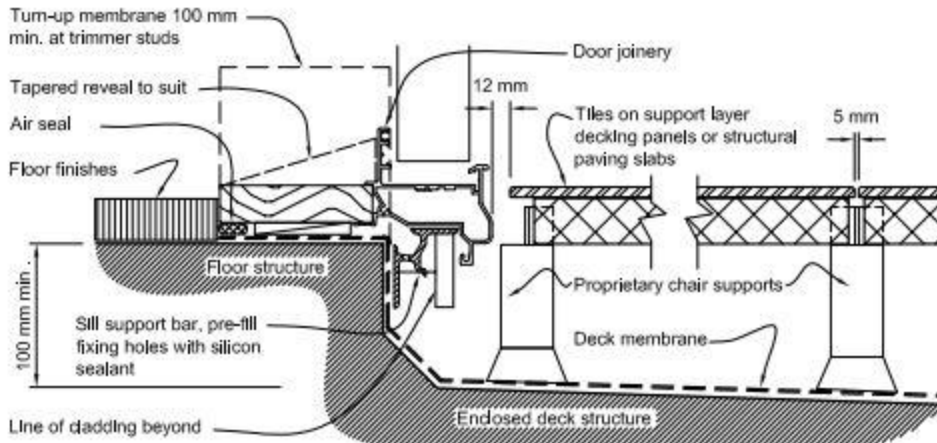
NOTE:

- (1) For use for framed, above ground enclosed decks with membrane surfaces.
- (2) Care must be taken to ensure that no fixings or sharp edges penetrate the weathertight membrane deck surface.
- (3) Refer also to Paragraph 8.5.

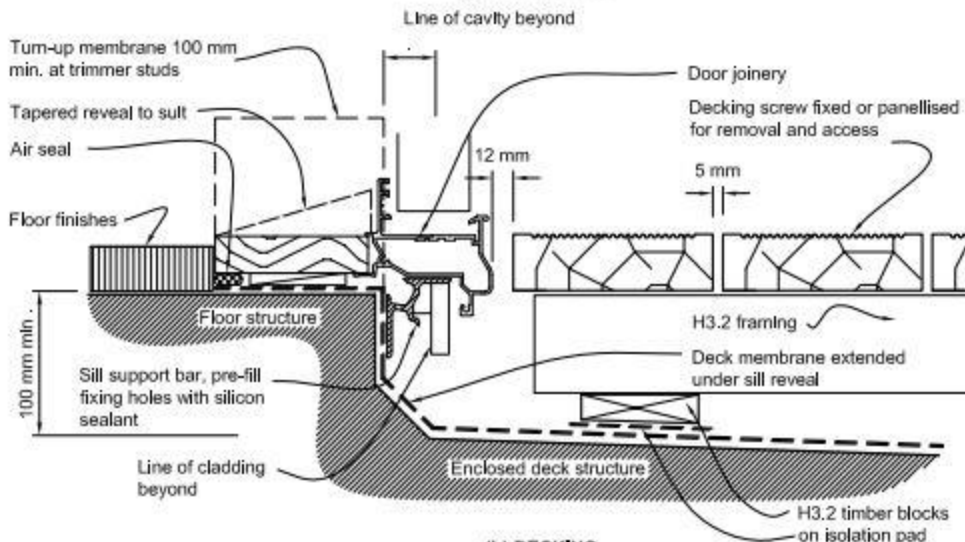
Errata 2
Dec 2011

Errata 2
Dec 2011

Errata 2
Dec 2011



(a) TILE/PAVING



(b) DECKING

Amend 5
Aug 2011